

Social Story

Visiting Wellington Museum

TĀWĪHIRI | festivals
and
experiences

INTRODUCTION

We are going to an art exhibition called **Wāhine Māori: Te Toi o Te Ātetenga The Art of Resistance.**

The exhibition will have photography, paintings, sculpture and weaving.

The art exhibition is located in Wellington Museum.

Wellington Museum is a big building with multiple levels.

The art exhibition is on the ground level.



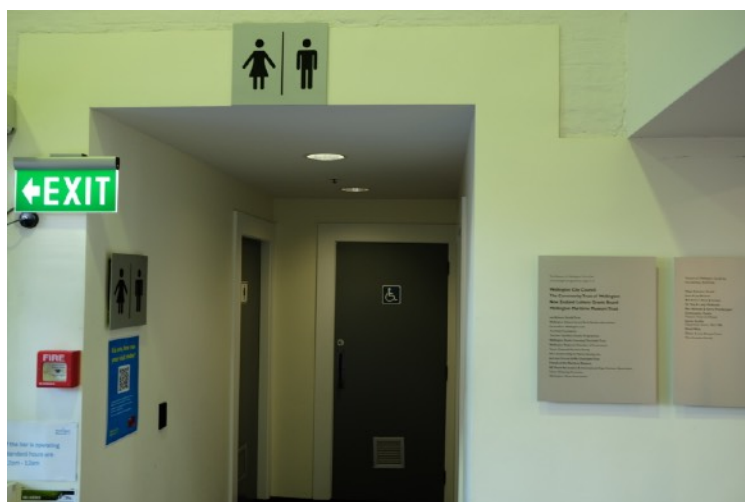
ENTERING WELLINGTON MUSEUM

When we arrive:

We'll walk through two sets of sliding doors to enter the Museum. The sliding doors will open by themselves.



There is a toilet that we can use if we need to. It is on the left side after we enter through the first set of sliding doors.



FRONT DESK

When we enter we'll see the front desk.

There will be staff behind the desk.

They can help us if we have any questions.

They can show us where to find a space that's quiet.

We can store our coats or bags behind the desk.

If we have food or drinks we'll leave those here.

We keep food and drinks away from the exhibitions because they could damage the objects and displays.

Our belongings will be safe at the front desk.

We can collect our belongings when we leave.



ENTERING THE EXHIBITION

The entrance to the exhibition is to the left of the front desk.

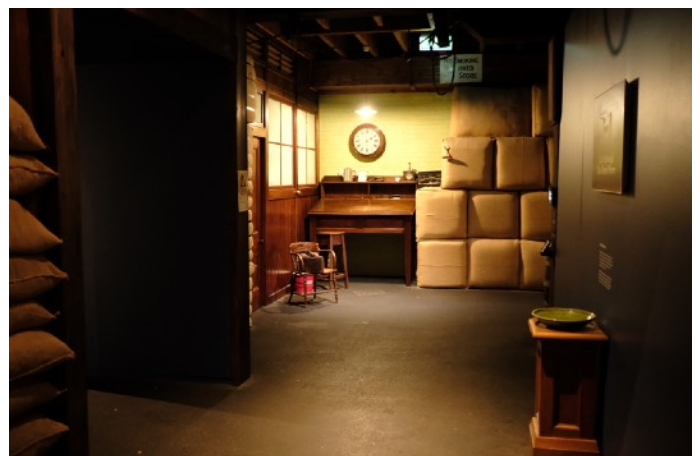
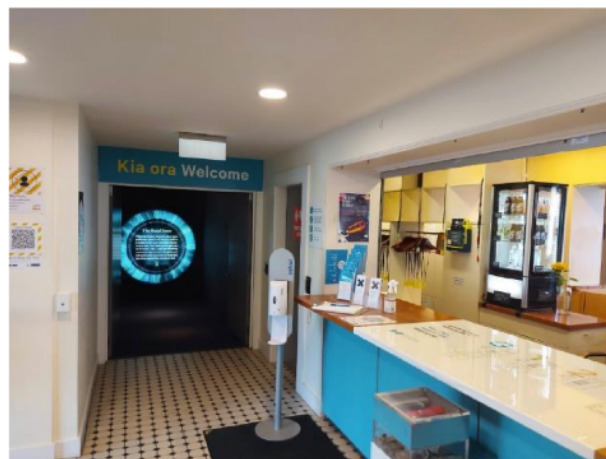
We enter into a room with a bright blue circle.

We then enter a room called the Bond Store.

The Bond Store is a room with a lot of objects that show what things looked like in the 1890s.

There is a mechanical rat that might move on a mast.

The rat is on a rail and won't fall down.



Once you go through The Bond Store you will come to another room with stairs.

There may be art or sculpture in this room.

We get to the exhibition we are seeing by walking past the stairs on the left.

There will be a garage door with colourful designs on it. That is the entrance to the exhibition.



LEAVING WELLINGTON MUSEUM

We exit the exhibition coming back the way we came through The Bond Store.

There will be a sign to direct us towards the exit.

The signs will lead us back to the front desk.

We can pick up any of our belongings we may have left at the front desk.

We exit the museum through the same two sets of sliding doors we entered through.

